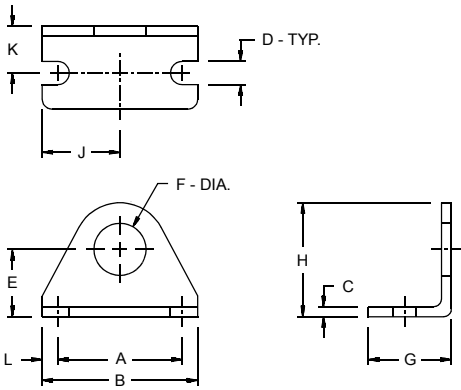


## MOUNTING ACCESSORIES: Dimensional Data

### Foot Bracket

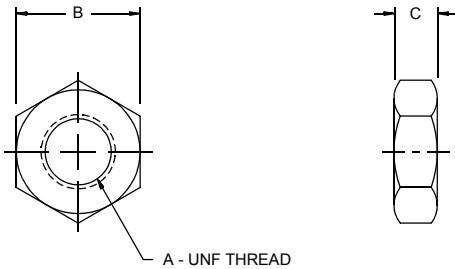


Bore	Foot Bkt. No.	Dimension										
		A	B	C	D	E	F	G	H	J	K	L
3/4"	M21	1.50	1.87	.12	.28	0.81	0.62	1.00	1.37	0.93	0.56	.18
1 1/8"	M41	1.50	1.87	.12	.28	0.87	0.75	1.06	1.50	0.93	0.59	.18
1 1/2"	M61	1.87	2.37	.19	.28	1.18	1.00	1.37	2.06	1.18	0.78	.25
2"	M81	2.37	3.00	.25	.34	1.50	1.25	1.68	2.56	1.50	0.96	.31
2 1/2"	M91	2.87	3.75	.25	.34	1.75	1.50	1.62	3.06	1.87	1.00	.43

Note: One mounting nut is provided with each foot bracket ordered.



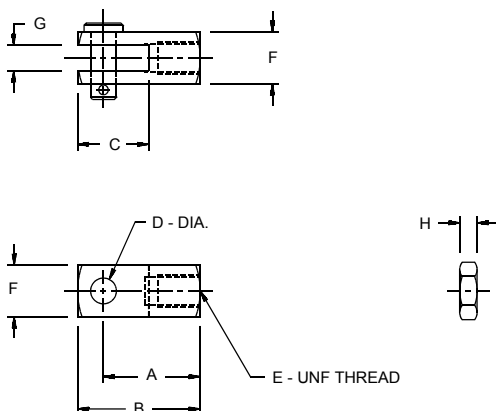
### Mounting Nut



Bore	Mtg. Nut No.	Dimension		
		A	B	C
3/4"	M25	5/8-18	0.93	.37
1 1/8"	M45	3/4-16	1.12	.42
1 1/2"	M65	1-14	1.50	.54
2"	M85	1 1/4-12	1.87	.54
2 1/2"	M95	1 3/8-12	1.87	.50



### Rod Clevis



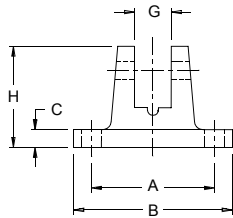
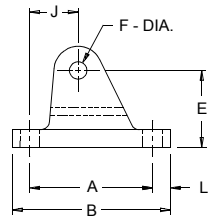
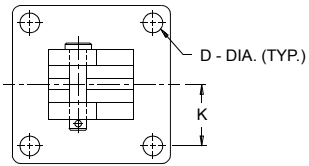
Bore	Rod Clevis No.	Dimension							
		A	B	C	D	E	F	G	H
3/4"	M24	0.93	1.18	0.68	.25	5/16-24	.50	.25	.18
1 1/8"	M44	1.12	1.37	0.68	.25	3/8-24	.56	.25	.21
1 1/2"	M64	1.43	1.81	0.93	.37	1/2-20	.75	.37	.31
2"	M84	1.87	2.31	1.31	.43	5/8-18	.87	.43	.37
2 1/2"	M94	1.31	1.68	0.93	.37	1/2-20	.75	.37	.31

Note: Rod nut and pin are provided with each rod clevis ordered.

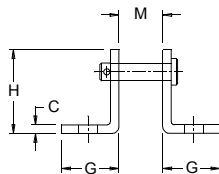
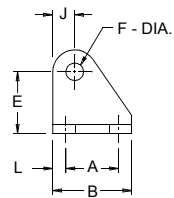
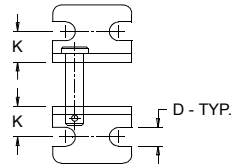


## MOUNTING ACCESSORIES: Dimensional Data (Continued)

### Pivot Bracket

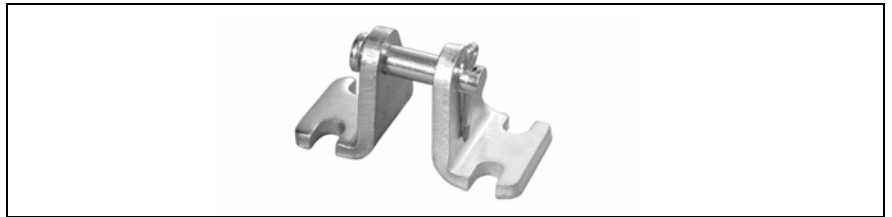
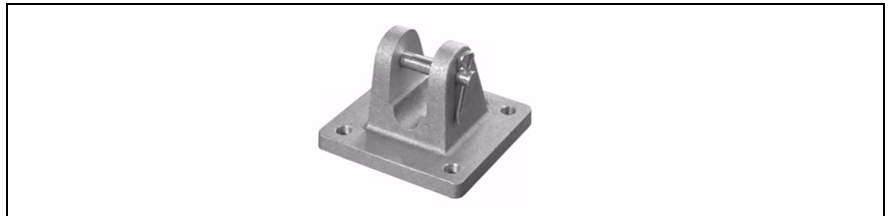


**M 93**

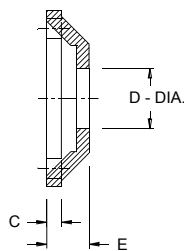
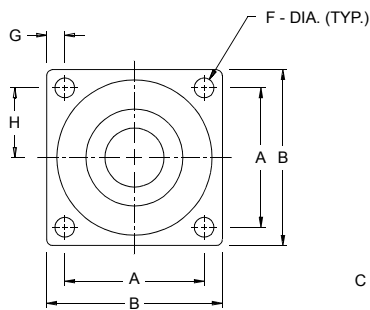


Bore	Pivot Bkt. No.	Dimension											
		A	B	C	D	E	F	G	H	J	K	L	M
3/4"	M23	1.75	2.25	.25	.28	1.09	.25	0.37	1.43	.68	0.87	.25	--
1 1/8"	M43	1.75	2.25	.25	.28	1.09	.25	0.50	1.43	.68	0.87	.25	--
1 1/2"	M63	2.25	3.00	.31	.28	1.62	.31	0.75	2.12	.87	1.12	.37	--
2"	M83	2.25	3.00	.31	.28	1.62	.31	0.75	2.12	.87	1.12	.37	--
2 1/2"	M93	1.00	1.50	.24	.34	1.37	.37	1.12	1.75	.37	0.68	.25	.75

Note: Pivot Pin & Cotter Pin included with each Pivot Bracket ordered.



### Flange



Bore	Pivot Bkt. No.	Dimension							
		A	B	C	D	E	F	G	H
3/4"	M22	1.62	2.12	.21	0.62	.50	.28	.25	0.81
1 1/8"	M42	2.00	2.50	.25	0.75	.62	.28	.25	1.00
1 1/2"	M62	2.50	3.25	.31	1.00	.75	.28	.37	1.25
2"	M82	2.87	3.62	.31	1.25	.87	.28	.37	1.43

Note: One mounting nut is provided with each Flange ordered.

