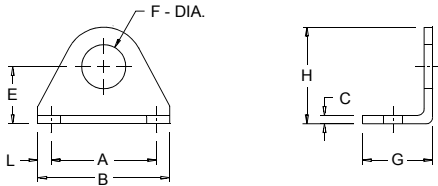
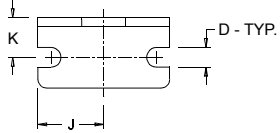


MOUNTING ACCESSORIES: Dimensional Data

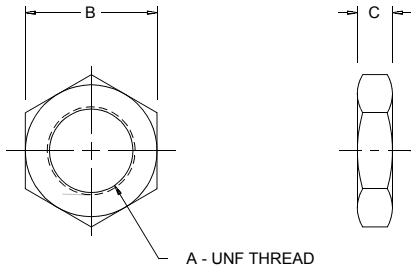
Foot Bracket



Bore	Foot Bkt. No.	Dimension										
		A	B	C	D	E	F	G	H	J	K	L
3/4" S.A.	MS21SS	1.25	1.62	.12	.18	.68	.50	.75	1.09	.81	.43	.18
3/4"	MS21	1.50	1.87	.12	.28	.81	.62	1.00	1.37	.93	.56	.18
1 1/16"	MS21	1.50	1.87	.12	.28	.81	.62	1.00	1.37	.93	.56	.18
1 1/2"	MS61	1.87	2.37	.12	.28	1.18	1.00	1.37	2.06	1.18	.78	.25
2"	MS81S	2.25	3.12	.25	.34	1.50	1.37	1.62	2.56	1.56	1.00	.43

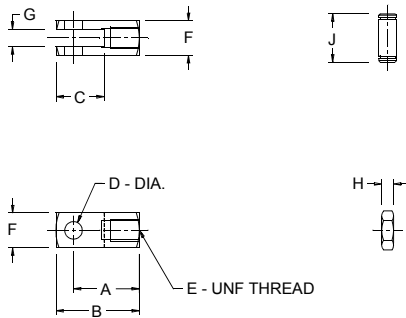
Note: One mounting nut is provided with each foot bracket ordered.

Mounting Nut



Bore	Mtg. Nut No.	Dimension		
		A	B	C
3/4" S.A.	MS25SS	1/2-20	.74	.31
3/4"	MS25	5/8-18	.93	.37
1 1/16"	MS25	5/8-18	.93	.37
1 1/2"	MS65	1-14	1.50	.54
2"	MS85	1 1/4-12	1.87	.50

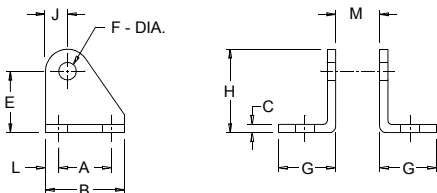
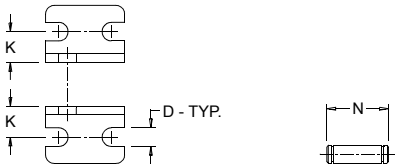
Rod Clevis



Bore	Rod Clevis No.	Dimension								
		A	B	C	D	E	F	G	H	J
3/4"	MS24S	0.93	1.18	.68	.25	1/4-28	.50	.25	.15	0.68
1 1/16"	MS24	0.93	1.18	.68	.25	5/16-24	.50	.25	.18	0.68
1 1/2"	MS64S	1.31	1.68	.93	.37	7/16-20	.75	.37	.25	1.01
2"	MS94	1.31	1.68	.93	.37	1/2-20	.75	.37	.37	1.01

Note: Rod nut, pin and E-rings are provided with each rod clevis ordered.

Pivot Bracket



Bore	Pivot Bkt. No.	Dimension												
		A	B	C	D	E	F	G	H	J	K	L	M	N
3/4"	MS23SP	.75	1.12	.12	.26	.87	.25	.81	1.18	.31	.43	.18	.37	0.87
1 1/16"	MS23SP	.75	1.12	.12	.26	.87	.25	.81	1.18	.31	.43	.18	.37	0.87
1 1/2"	MS63SP	1.00	1.50	.12	.26	1.37	.37	1.00	1.75	.37	.62	.25	.62	1.18
2"	MS93	1.00	1.50	.12	.26	1.37	.37	1.00	1.75	.37	.62	.25	.75	1.31

Note: Pivot pin and E-rings are provided with each bracket ordered.