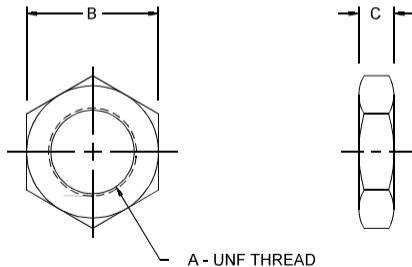




## CR-Series Mounting Nuts



Bore	Mtg. Nut No.	Dimension		
		A	B	C
3/4" S.A.	MS25SS	1/2-20	.74	.31
3/4"	MS25	5/8-18	.93	.37
1 1/16"	MS25	5/8-18	.93	.37
1 1/2"	MS65	1-14	1.50	.54
2"	MS85	1 1/4-12	1.87	.50