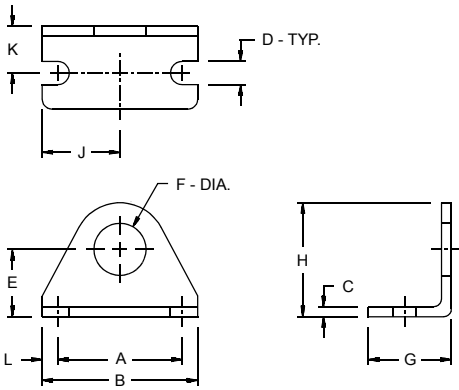


# MOUNTING ACCESSORIES: Dimensional Data

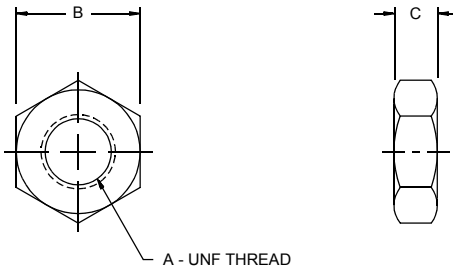
## Foot Bracket



Bore	Foot Bkt. No.	Dimension										
		A	B	C	D	E	F	G	H	J	K	L
5/16" S.A.	M01SS	0.75	1.00	.06	.13	.43	.25	.37	.75	.50	.25	.12
5/16"	M01SD	0.75	1.00	.06	.13	.43	.37	.37	.75	.50	.25	.12
7/16" S.A.	M11SS	1.00	1.37	.07	.18	.56	.37	.62	.87	.68	.31	.18
7/16"	M11SD	1.00	1.37	.07	.18	.56	.43	.62	.93	.68	.31	.18
9/16"	M11SD	1.00	1.37	.07	.18	.56	.43	.62	.93	.68	.31	.18
3/4" S.A.	M21SS	1.25	1.62	.10	.18	.68	.50	.75	1.09	.81	.43	.18
3/4"	M21	1.50	1.87	.12	.28	.81	.62	1.00	1.37	.93	.56	.18
7/8"	M21	1.50	1.87	.12	.28	.81	.62	1.00	1.37	.93	.56	.18
1 1/16"	M21	1.50	1.87	.12	.28	.81	.62	1.00	1.37	.93	.56	.18
1 1/4"	M61S	1.87	2.50	.15	.28	1.00	.75	1.50	1.75	1.25	.75	.31
1 1/2"	M61S	1.87	2.50	.15	.28	1.00	.75	1.50	1.75	1.25	.75	.31
1 3/4"	M71S	2.25	3.00	.18	.34	1.25	1.03	1.50	2.12	1.50	.87	.37
2"	M81S	2.25	3.12	.25	.34	1.50	1.37	1.62	2.56	1.56	1.00	.43
3"	M101S	3.50	4.37	.25	.34	1.89	1.62	1.62	3.14	2.18	1.00	.43

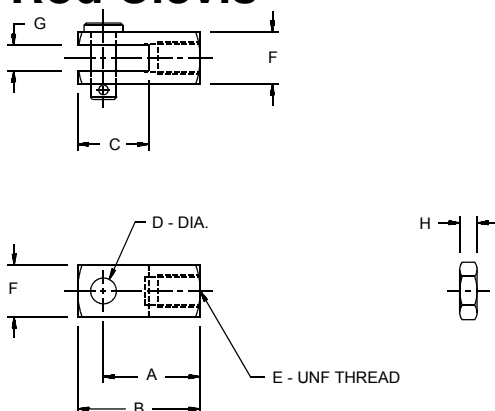
Note: One mounting nut is provided with each foot bracket ordered.

## Mounting Nut



Bore	Mtg. Nut No.	Dimension		
		A	B	C
5/16" S.A.	M05SS	1/4-28	.43	.15
5/16"	M15SS	3/8-24	.56	.21
7/16" S.A.	M15SS	3/8-24	.56	.21
7/16"	M15SD	7/16-20	.68	.25
9/16"	M15SD	7/16-20	.68	.25
3/4" S.A.	M25SS	1/2-20	.74	.31
3/4"	M25	5/8-18	.93	.37
7/8"	M25	5/8-18	.93	.37
1 1/16"	M25	5/8-18	.93	.37
1 1/4"	M45	3/4-16	1.12	.42
1 1/2"	M45	3/4-16	1.12	.42
1 3/4"	M65	1-14	1.50	.54
2"	M85	1 1/4-12	1.87	.54
3"	M105S	1 1/2-12	2.25	.50

## Rod Clevis

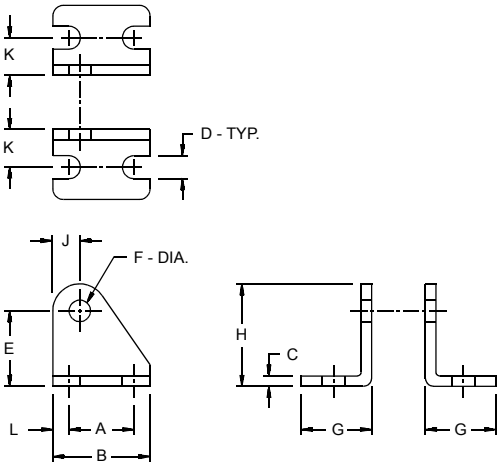


Bore	Rod Clevis No.	Dimension							
		A	B	C	D	E	F	G	H
5/16"	M04S	.43	.56	.37	.12	5-40	.31	.13	.10
7/16"	M14S	.75	.93	.56	.18	10-32	.37	.18	.12
9/16"	M14S	.75	.93	.56	.18	10-32	.37	.18	.12
3/4"	M24S	.93	1.18	.68	.25	1/4-28	.50	.25	.15
7/8"	M24S	.93	1.18	.68	.25	1/4-28	.50	.25	.15
1 1/16"	M24	.93	1.18	.68	.25	5/16-24	.50	.25	.18
1 1/4"	M64S	1.31	1.68	.93	.37	7/16-20	.75	.37	.25
1 1/2"	M64S	1.31	1.68	.93	.37	7/16-20	.75	.37	.25
1 3/4"	M94	1.31	1.68	.93	.37	1/2-20	.75	.37	.31
2"	M94	1.31	1.68	.93	.37	1/2-20	.75	.37	.31
3"	M104S	2.25	2.75	1.50	.50	5/8-18	1.00	.50	.37

Note: Rod nut and pin are provided with each rod clevis ordered.

## MOUNTING ACCESSORIES: Dimensional Data (Continued)

### Pivot / Trunnion Bracket

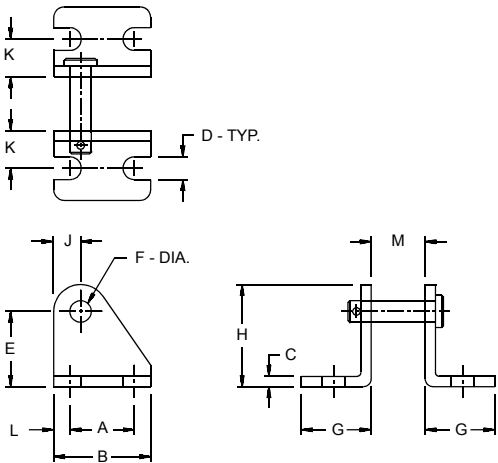


### Pivot Bracket - Style I

Bore	Pivot Bkt. No.	Dimension										
		A	B	C	D	E	F	G	H	J	K	L
7/16"	M13S	.50	.75	.06	.18	.56	.15	.50	.77	.20	.28	.12
9/16"	M13S	.50	.75	.06	.18	.56	.15	.50	.77	.20	.28	.12
3/4"	M23S	.75	1.12	.12	.26	.87	.25	.81	1.18	.31	.43	.18
7/8"	M23S	.75	1.12	.12	.26	.87	.25	.81	1.18	.31	.43	.18
1 1/16"	M23S	.75	1.12	.12	.26	.87	.25	.81	1.18	.31	.43	.18
1 1/4"	M23S	.75	1.12	.12	.26	.87	.25	.81	1.18	.31	.43	.18
1 1/2"	M63S	1.00	1.50	.12	.26	1.37	.37	1.00	1.75	.37	.62	.25

### Trunnion Bracket

Bore	Trunnion Bkt. No.	Dimension										
		A	B	C	D	E	F	G	H	J	K	L
7/16"	M17S	1.00	1.50	.25	.34	1.37	.37	1.12	1.75	.37	.68	.25
3/4"	M37S	1.00	1.50	.25	.34	1.37	.50	1.12	1.75	.37	.68	.25
1 1/16"	M37S	1.00	1.50	.25	.34	1.37	.50	1.12	1.75	.37	.68	.25
1 1/2"	M37S	1.00	1.50	.25	.34	1.37	.50	1.12	1.75	.37	.68	.25

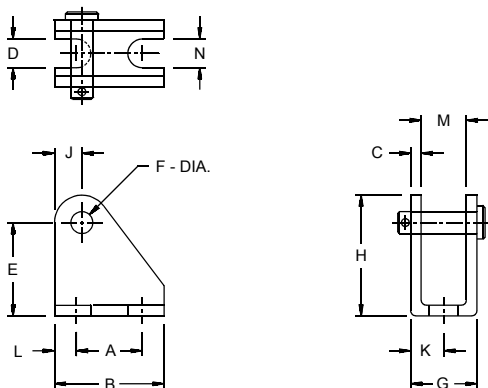


### Pivot Bracket - Style II

Bore	Pivot Bkt. No.	Dimension												
		A	B	C	D	E	F	G	H	J	K	L	M	
7/16"	M13SP	.50	.75	.06	.18	.56	.15	.50	.77	.20	.28	.12	.31	
9/16"	M13SP	.50	.75	.06	.18	.56	.15	.50	.77	.20	.28	.12	.31	
3/4"	M23SP	.75	1.12	.12	.26	.87	.25	.81	1.18	.31	.43	.18	.37	
7/8"	M23SP	.75	1.12	.12	.26	.87	.25	.81	1.18	.31	.43	.18	.37	
1 1/16"	M23SP	.75	1.12	.12	.26	.87	.25	.81	1.18	.31	.43	.18	.37	
1 1/4"	M53SP	.75	1.12	.12	.26	.87	.25	.81	1.18	.31	.43	.18	.50	
1 1/2"	M63SP	1.00	1.50	.12	.26	1.37	.37	1.00	1.75	.37	.62	.25	.62	
1 3/4"	M73SP	1.00	1.50	.25	.34	1.37	.37	1.12	1.75	.37	.68	.25	.62	
2"	M93	1.00	1.50	.25	.34	1.37	.37	1.12	1.75	.37	.68	.25	.75	
3"	M103SP	1.25	1.75	.25	.26	1.75	.50	1.50	2.25	.50	.87	.25	.87	

NOTES

- Style II Brackets are only for models having the (-2) Pivot Bushing Option.
- Pivot Pin & Cotter Pin included with each Style II Bracket ordered.



### Pivot Bracket - Style III

Bore	Pivot Bkt. No.	Dimension													
		A	B	C	D	E	F	G	H	J	K	L	M	N	
5/16"	M03SP	.37	.62	.04	15*	.40	.12	.36	.53	.12	.18	.12	.26	.15*	
3/4"	M33S	.75	1.18	.12	.26	.87	.25	.62	1.18	.31	.31	.21	.38	.26	
7/8"	M33S	.75	1.18	.12	.26	.87	.25	.62	1.18	.31	.31	.21	.38	.26	
1 1/16"	M33S	.75	1.18	.12	.26	.87	.25	.62	1.18	.31	.31	.21	.38	.26	
1 1/4"	M53S	.75	1.25	.12	.32	1.06	.25	.76	1.37	.31	.37	.25	.51	.32*	

NOTES

- Style III Brackets are only for models having the (-2) Pivot Bushing Option.
- Pivot Pin & Cotter Pin included with each Style III Bracket ordered.
- \* These are thru hole diameters, not slots as shown.