

 **American**[®]

Hard Coated Aluminum Body Air Cylinders

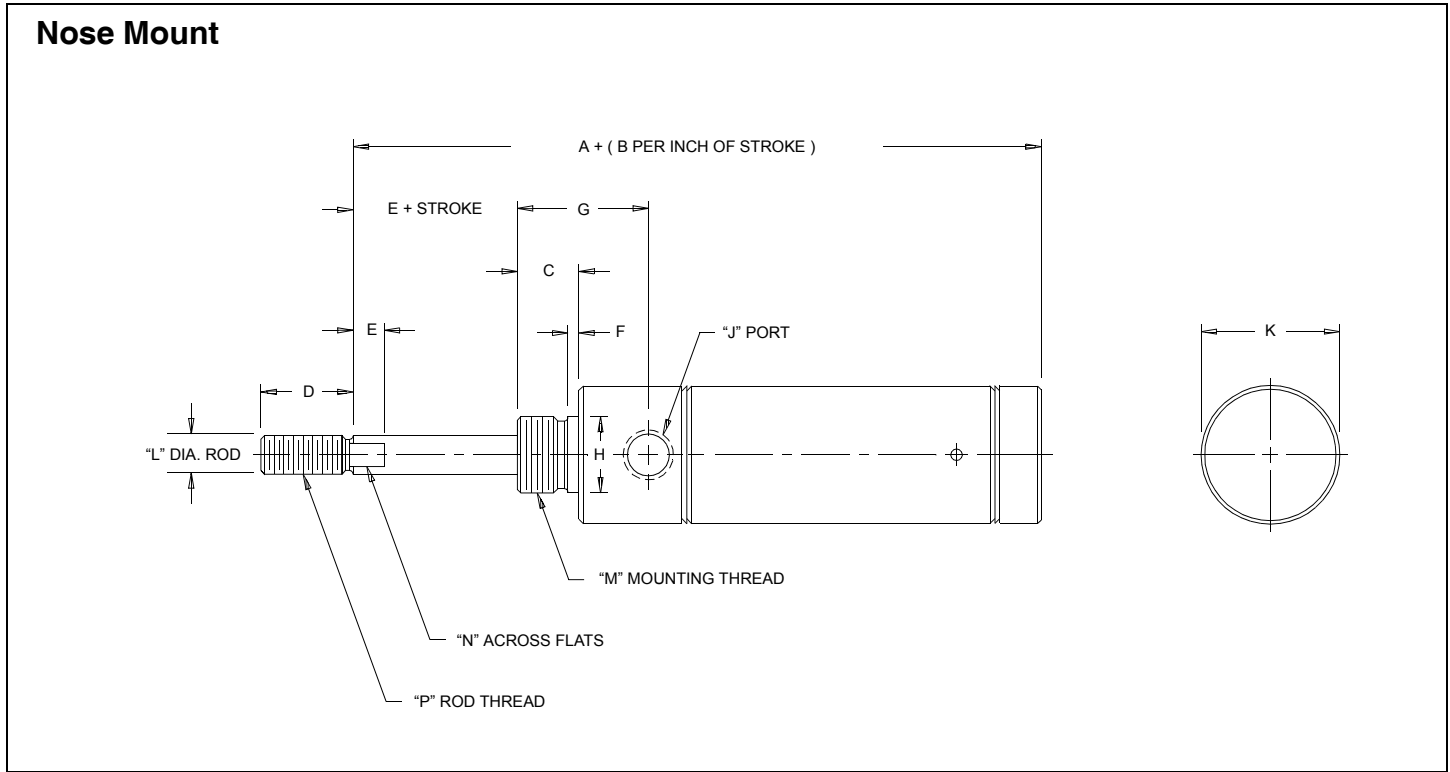


76 

Air Cylinders $\frac{3}{4}$ -inch through 2 $\frac{1}{2}$ -inch bore

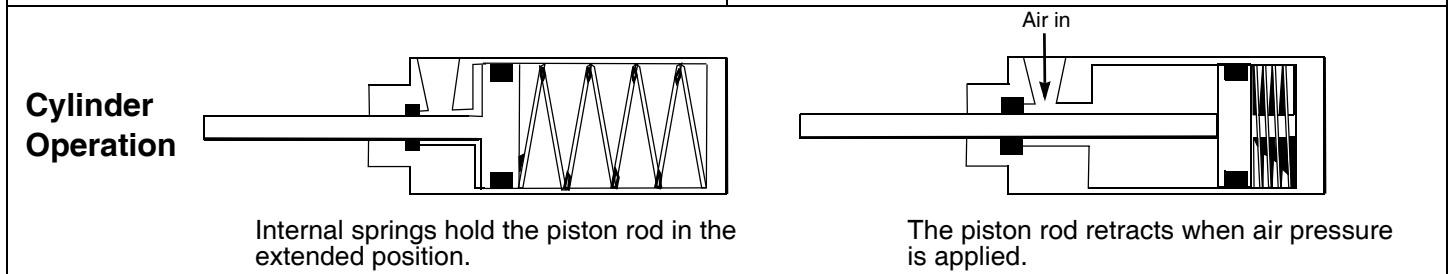
American Cylinder Co., Inc.

REVERSE ACTING: Nose Mount



Bore	Model	Standard Stroke Lengths (in.)
3/4"	750RN-□.□□	1/2, 1, 1 1/2, 2, 3, 4
1 1/8"	1125RN-□.□□	1/2, 1, 1 1/2, 2, 3, 4
1 1/2"	1500RN-□.□□	1/2, 1, 1 1/2, 2, 3, 4
2"	2000RN-□.□□	1/2, 1, 1 1/2, 2, 3, 4

□.□□ Enter stroke length to complete model no.

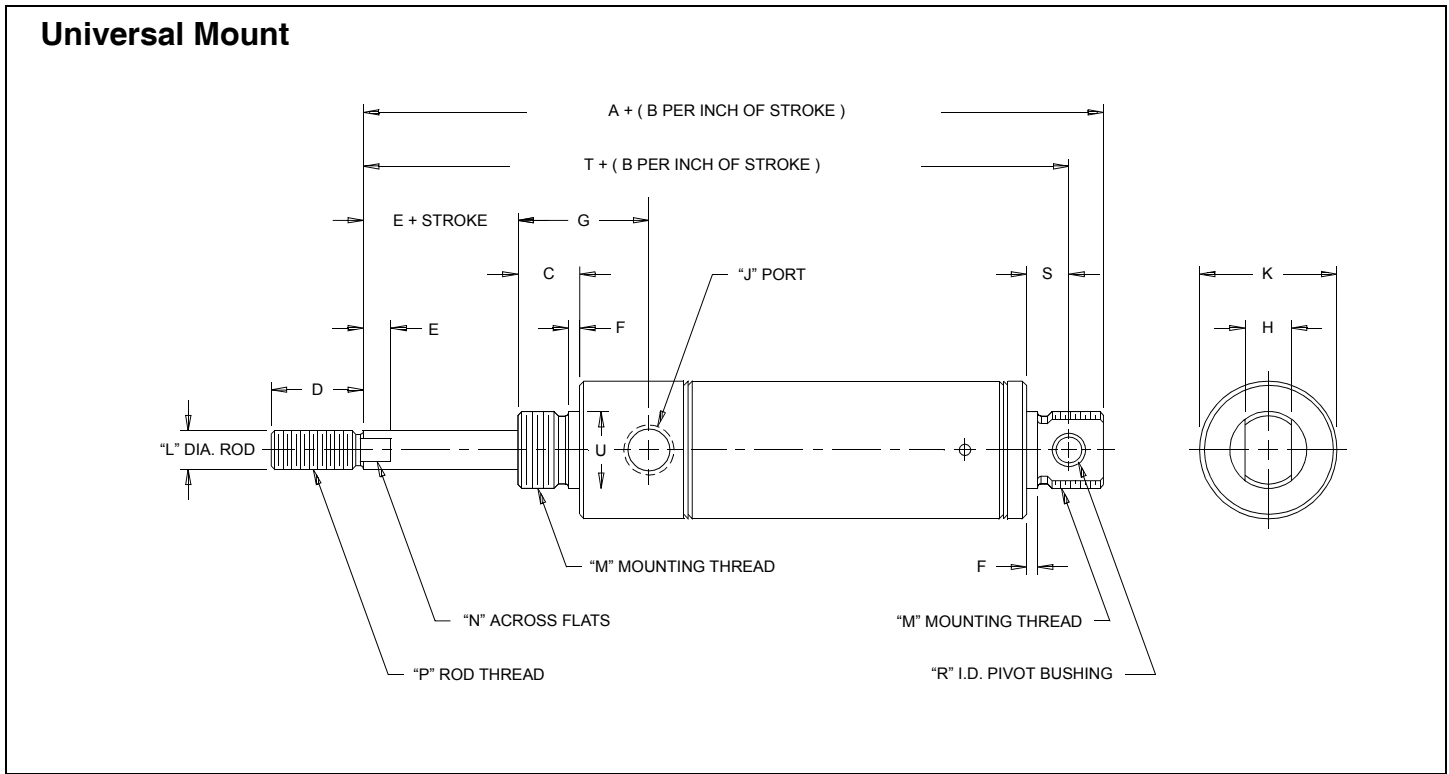


Aluminum Body Series - Model RN - Reverse Acting Nose Mount

Bore	Dimension														Mounting Accessories		
	A	B	C	D	E	F	G	H*	J	K	L	M	N	P	Foot Bkt.	Flange	Mtg. Nut
3/4"	2.75	2.62	.50	.50	.25	.06	1.00	0.62	1/8 NPT	1.00	.31	5/8-18	.25	5/16-24	M21	M22	M25
1 1/8"	3.18	2.75	.62	.50	.25	.09	1.18	0.75	1/8 NPT	1.28	.37	3/4-16	.31	3/8-24	M41	M42	M45
1 1/2"	3.68	2.81	.75	.75	.25	.09	1.37	1.00	1/4 NPT	1.71	.50	1-14	.43	1/2-20	M61	M62	M65
2"	4.31	2.81	.87	.87	.37	.10	1.62	1.25	1/4 NPT	2.23	.62	1 1/4-12	.56	5/8-18	M81	M82	M85

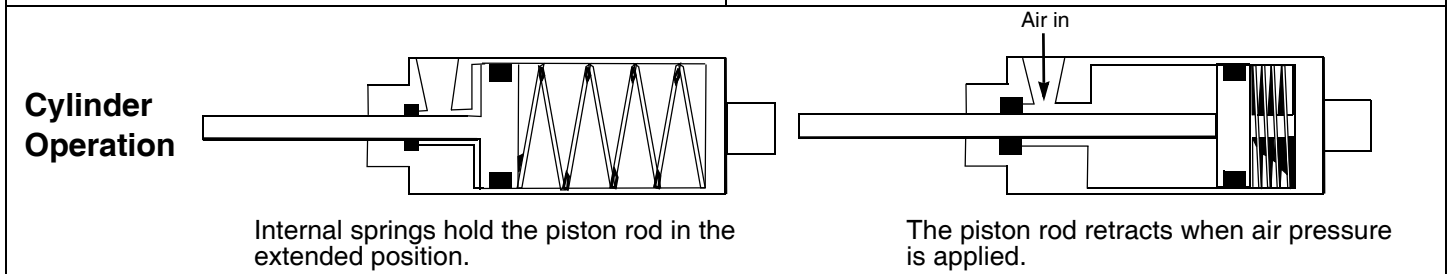
Note: * Pilot diameter.

REVERSE ACTING: Universal Mount



Bore	Model	Standard Stroke Lengths (in.)
3/4"	750RV-□.□□	1/2, 1, 1 1/2, 2, 3, 4
1 1/8"	1125RV-□.□□	1/2, 1, 1 1/2, 2, 3, 4
1 1/2"	1500RV-□.□□	1/2, 1, 1 1/2, 2, 3, 4
2"	2000RV-□.□□	1/2, 1, 1 1/2, 2, 3, 4

□.□□ Enter stroke length to complete model no.



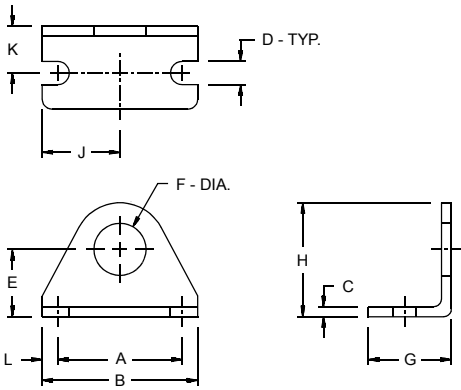
Aluminum Body Series - Model RV - Reverse Acting Universal Mount

Bore	Dimension																		Mounting Accessories		
	A	B	C	D	E	F	G	H	J	K	L	M	N	P	R	S	T	U*	Foot Bkt.	Pivot Bkt.	Rod Clevis
3/4"	3.37	2.62	.50	.50	.25	.06	1.00	.37	1/8 NPT	1.00	.31	5/8-18	.25	5/16-24	.25	.46	3.09	0.62	M21	M23	M24
1 1/8"	3.81	2.75	.62	.50	.25	.09	1.18	.50	1/8 NPT	1.28	.37	3/4-16	.31	3/8-24	.25	.50	3.50	0.75	M41	M43	M44
1 1/2"	4.56	2.81	.75	.75	.25	.09	1.37	.75	1/4 NPT	1.71	.50	1-14	.43	1/2-20	.31	.71	4.15	1.00	M61	M63	M64
2"	5.25	2.81	.87	.87	.37	.10	1.62	.75	1/4 NPT	2.23	.62	1 1/4-12	.56	5/8-18	.31	.71	4.84	1.25	M81	M83	M84

Note: * Pilot diameter.

MOUNTING ACCESSORIES: Dimensional Data

Foot Bracket

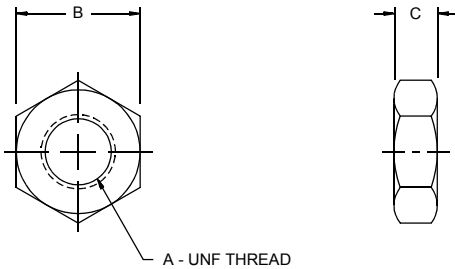


Bore	Foot Bkt. No.	Dimension										
		A	B	C	D	E	F	G	H	J	K	L
3/4"	M21	1.50	1.87	.12	.28	0.81	0.62	1.00	1.37	0.93	0.56	.18
1 1/8"	M41	1.50	1.87	.12	.28	0.87	0.75	1.06	1.50	0.93	0.59	.18
1 1/2"	M61	1.87	2.37	.19	.28	1.18	1.00	1.37	2.06	1.18	0.78	.25
2"	M81	2.37	3.00	.25	.34	1.50	1.25	1.68	2.56	1.50	0.96	.31
2 1/2"	M91	2.87	3.75	.25	.34	1.75	1.50	1.62	3.06	1.87	1.00	.43

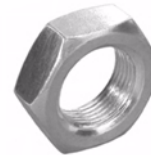
Note: One mounting nut is provided with each foot bracket ordered.



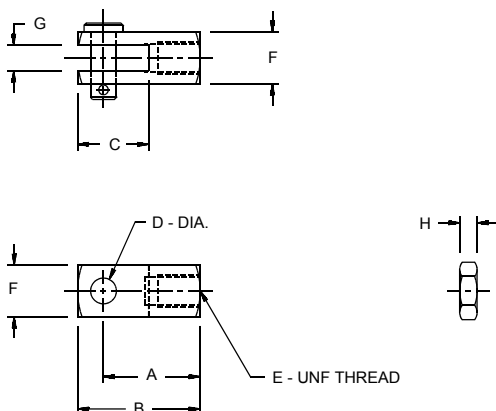
Mounting Nut



Bore	Mtg. Nut No.	Dimension		
		A	B	C
3/4"	M25	5/8-18	0.93	.37
1 1/8"	M45	3/4-16	1.12	.42
1 1/2"	M65	1-14	1.50	.54
2"	M85	1 1/4-12	1.87	.54
2 1/2"	M95	1 3/8-12	1.87	.50



Rod Clevis



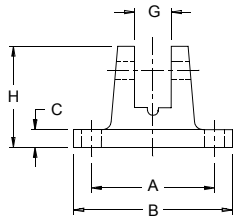
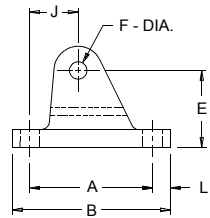
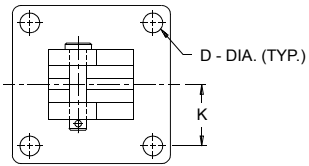
Bore	Rod Clevis No.	Dimension							
		A	B	C	D	E	F	G	H
3/4"	M24	0.93	1.18	0.68	.25	5/16-24	.50	.25	.18
1 1/8"	M44	1.12	1.37	0.68	.25	3/8-24	.56	.25	.21
1 1/2"	M64	1.43	1.81	0.93	.37	1/2-20	.75	.37	.31
2"	M84	1.87	2.31	1.31	.43	5/8-18	.87	.43	.37
2 1/2"	M94	1.31	1.68	0.93	.37	1/2-20	.75	.37	.31

Note: Rod nut and pin are provided with each rod clevis ordered.

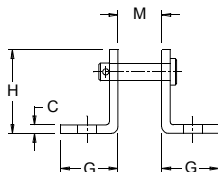
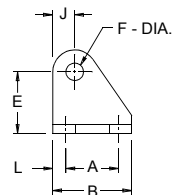
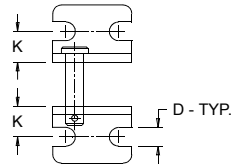


MOUNTING ACCESSORIES: Dimensional Data (Continued)

Pivot Bracket

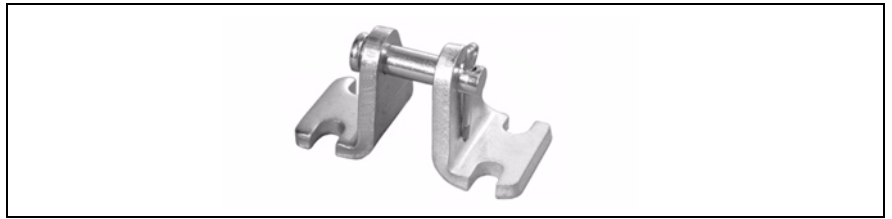
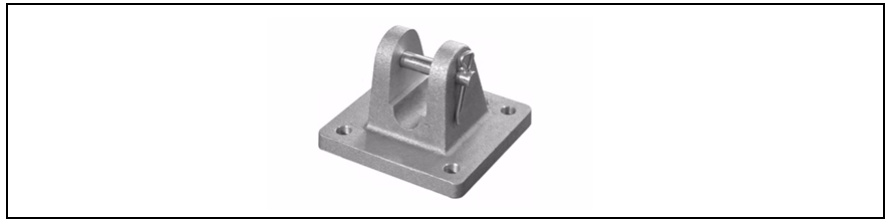


M 93

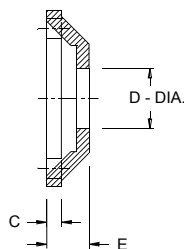
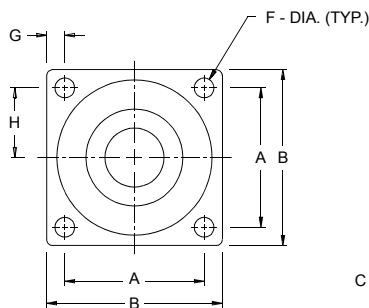


Bore	Pivot Bkt. No.	Dimension											
		A	B	C	D	E	F	G	H	J	K	L	M
3/4"	M23	1.75	2.25	.25	.28	1.09	.25	0.37	1.43	.68	0.87	.25	--
1 1/8"	M43	1.75	2.25	.25	.28	1.09	.25	0.50	1.43	.68	0.87	.25	--
1 1/2"	M63	2.25	3.00	.31	.28	1.62	.31	0.75	2.12	.87	1.12	.37	--
2"	M83	2.25	3.00	.31	.28	1.62	.31	0.75	2.12	.87	1.12	.37	--
2 1/2"	M93	1.00	1.50	.24	.34	1.37	.37	1.12	1.75	.37	0.68	.25	.75

Note: Pivot Pin & Cotter Pin included with each Pivot Bracket ordered.

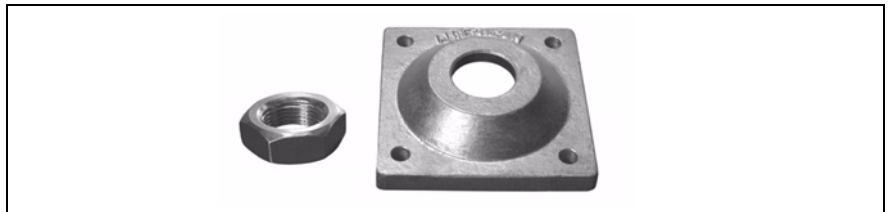


Flange



Bore	Pivot Bkt. No.	Dimension							
		A	B	C	D	E	F	G	H
3/4"	M22	1.62	2.12	.21	0.62	.50	.28	.25	0.81
1 1/8"	M42	2.00	2.50	.25	0.75	.62	.28	.25	1.00
1 1/2"	M62	2.50	3.25	.31	1.00	.75	.28	.37	1.25
2"	M82	2.87	3.62	.31	1.25	.87	.28	.37	1.43

Note: One mounting nut is provided with each Flange ordered.





American Cylinder Co., Inc.

American Cylinder Co., Inc.
Peotone, Illinois 60468-9116
708/258-3935
FAX 708/258-3980

ON THE INTERNET

<http://www.americancylinder.com>

<http://www.ameristore.biz>

E-MAIL: amcyl@americancylinder.com

Warranty

American Cylinder Co., Inc. warrants its products to be free from defects in material and workmanship under normal wear and service for a period of 3 years from date of shipment of the order. American Cylinder Company shall have no liability under this warranty if: 1) The product is used other than in accordance with specifications. 2) The product is subjected to abuse, negligence, accident, misapplication, or unintended use. 3) The product is manufactured to buyer's specifications.

Manufacturer's liability shall be limited to allowance of credit or replacement of defective product. American Cylinder Company shall not be liable or responsible for injuries or damages to persons or property arising out of the use or operation of American Cylinder products.

THIS WARRANTY IS EXPRESSLY IN LIEU OF ALL OTHER WARRANTIES, EXPRESSED OR IMPLIED, INCLUDING ANY IMPLIED WARRANTY OF MERCHANTABILITY OR FITNESS FOR A PARTICULAR PURPOSE, LIABILITY FOR LOST PROFIT OR FOR INDIRECT, INCIDENTAL, CONSEQUENTIAL OR COMMERCIAL LOSSES, AND OF ALL OTHER OBLIGATIONS OR LIABILITIES.

These conditions subject to change without notice.